

Apana Broadcast

Partner Program
Earn Recurring Income with WhatsApp
Automation

FirePhoenixDev Pvt.Ltd. · www.apanabroadcast.com



Apana Broadcast

What is Apana Broadcast?

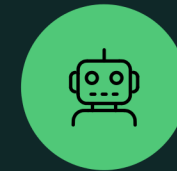
Apana Broadcast is a WhatsApp API-based automation platform designed to help businesses automate communication and grow faster.

Every business has WhatsApp and with a **90%+ message open rate**, the automation demand is growing rapidly while the market is still far from saturated.



Bulk WhatsApp Messaging

Send thousands of personalized messages to your entire customer base in one click



Auto Reply & Chatbot

Intelligent automated responses that engage leads and customers 24/7 without manual effort



Lead Engagement System

Capture, nurture, and convert leads automatically with structured engagement flows



Campaign Automation

Schedule and run multi-step campaigns that drive conversions on autopilot

The Problem & The Opportunity

Businesses across India are struggling with manual, inefficient communication for while the market for WhatsApp automation is growing at an explosive pace. The gap between the problem and the solution is your opportunity.

Businesses Face These Issues

→ Manual Replies

Staff spend hours answering the same questions repeatedly

→ Missed Leads

No follow-up system means potential customers are lost every day

→ No Automation System

Businesses rely on manual processes with no scalable solution in place

→ Low Conversion Rate

Low conversion rate
Without timely engagement, leads go cold and revenue suffers

Why This Opportunity is Huge

Every Business Uses WhatsApp

Massive built-in demand across every industry and city

90%+ Message Open Rate

Unmatched engagement compared to email or SMS marketing

Automation Demand is Growing

Businesses are actively looking for solutions like Apana Broadcast

Market Not Yet Saturated

Early partners gain maximum advantage before the market matures

Apana Broadcast Solves This

Our platform delivers a complete, ready-to-deploy automation solution that transforms how businesses communicate for turning every WhatsApp interaction into a growth opportunity.



Automated Replies

Set up smart auto-responses that engage every lead instantly for no human intervention required, no missed opportunities.



Bulk Campaigns

Reach thousands of customers simultaneously with personalized, targeted WhatsApp campaigns that drive real results.



Easy Dashboard

A simple, intuitive control panel that makes managing campaigns, contacts, and analytics effortless for any business owner.

■ **Customer Engagement Tools:** Complete suite of tools to nurture relationships, re-engage dormant customers, and boost long-term retention for all within WhatsApp.

PARTNER OPPORTUNITY

Why Become a Partner?

The Apana Broadcast Partner Programs designed for individuals and entrepreneurs who want to build a scalable, recurring income stream for with zero investment and full support from day one.

No Investment Required

Zero upfront cost to join. Start selling immediately with no financial risk.

Work From Anywhere

Fully remote business model for sell from your city, town, or village at your own pace.

Ready-to-Sell Product

A polished, high-demand platform you can pitch confidently from day one with no technical background needed.

High Demand Service

Every business that uses WhatsApp is a potential customer for your market is virtually unlimited.

Training & Support

Complete onboarding, sales training, and ongoing backend support so you're never alone.

Scalable Business Model

Each new client multiplies your monthly income for one client is one monthly income source.

Earn Recurring Income

Two simple plans with generous recurring commissions for earn every month, every quarter, every year for every client you bring on board.



Our Plans

Starter Plan - ₹1,999/month

25% Commission · Monthly / Quarterly / Yearly billing available · Lifetime recurring income on every renewal

Growth Plan - ₹2,999/month 

30% Commission · Most Popular · Higher income + better features for your clients · Monthly / Quarterly / Yearly billing

  **Growth Plan** = Extra income + better features 4 always recommend this to your clients!

Commission at a Glance

25%

Starter Plan

₹500/client/month recurring

30%

Growth Commission

₹900/client/month recurring

Your Income Potential

Real numbers. Real recurring income. Every client you add compounds your earnings for month after month, year after year.

Monthly Income

20 Clients × ₹2,999 = ₹59,980
30% Commission = **₹18,000/month**

Yearly Income

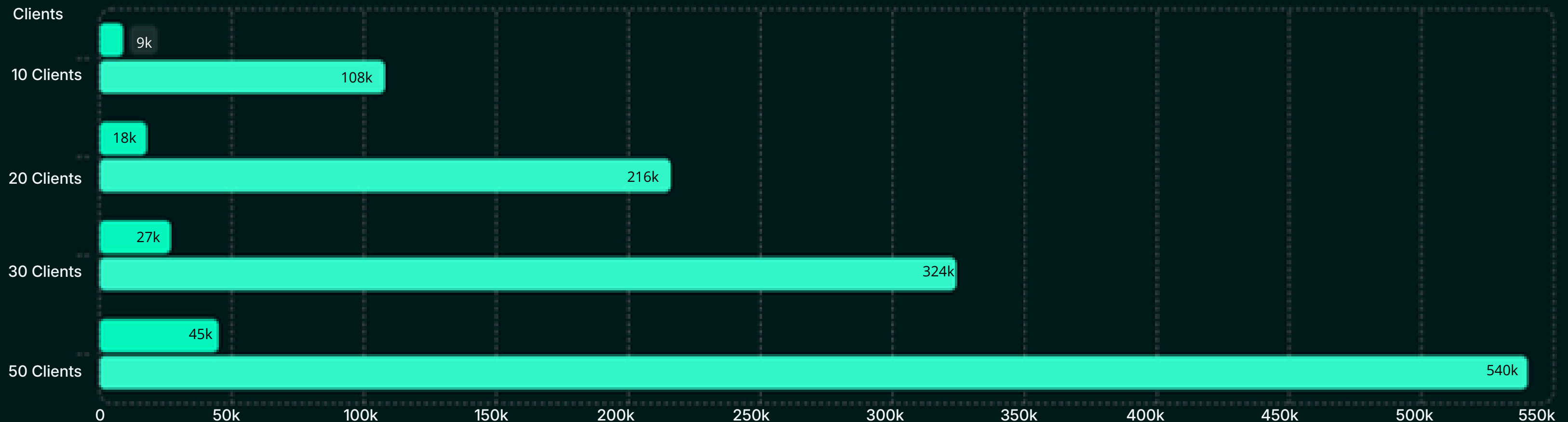
₹18,000 × 12 months =
₹2,16,000/year Fully recurring
for no extra effort required

Growth Vision

50 Clients ₹45,000/month
= **₹5,40,000/year** in passive recurring
income

■ Monthly Income ₹ ■ Yearly Income ₹

Recurring Income for Every Month, Every Year



Meta Verification + Extra Income Streams

Meta Verification

₹3,000 company charge – full support included

Chatbot Setup

₹5,000–₹8,000 per setup

CRM / ERP Integration

Starting ₹10,000+

Paid Campaigns

₹3,000+ per campaign

Graphics & Video

₹9,000/year package

WhatsApp Training

₹5,000+ per session

How It Works

Getting started is simple. Our streamlined onboarding and official Meta verification setup means you and your clients are up and running fast - with full support at every step.

01

Join Partner Program

Sign up with no investment required and get instant access to your partner dashboard and resources.

02

Get Training

Complete onboarding covers the platform, sales approach, and how to pitch to different business types.

03

Start Selling

Pitch to local businesses, doctors, coaches, retailers & anyone using WhatsApp to communicate with customers.

04

Earn Monthly Income

Every client you onboard pays you a recurring commission 4 month after month, for as long as they stay subscribed.



WhatsApp Official Setup

Meta Verification Required

Clients need official Meta Business verification to use the WhatsApp API & a one-time setup.

\$3,000 Company Charge

Setup fee is charged by the company & full technical support is provided end-to-end.

Partner Can Charge Extra

You may add your own service charge on top & an additional earning opportunity per new client.

TARGET MARKET

Who You Can Sell To

Any business that uses WhatsApp to talk to customers is a potential client. The market is enormous 4 and these are the highest- converting segments to target first.



Doctors & Clinics

Appointment reminders, follow-ups, and patient communication automation



Real Estate

Lead follow-up, property updates, and client engagement at scale



Coaching Classes

Student enrollment, class reminders, and batch communication made effortless



Retail Shops

Promotional campaigns, offer broadcasts, and customer loyalty programs via WhatsApp



Service Businesses

Plumbers, salons, travel agents 4 any service business that needs consistent customer communication



Why Choose Apana Broadcast?

Easy to use · High demand product · Strong backend support · Long-term recurring income for partners · Trusted by growing businesses across India.

GET STARTED

Start Earning Today

Limited partner slots available .Early partners gain maximum advantage.
The timeto join is now 4 before your city fill sup.

Limited Partner Slots

We keep our partner network exclusive to ensure quality and protect your territory


High Earning Potential

Up to ¹5,40,000/year in recurring income with just 50 clients on the Growth Plan

Early Advantage

First movers build the biggest client base 4 join now and own your market

 8237917905

 www.apanabroadcast.com



Apana Broadcast